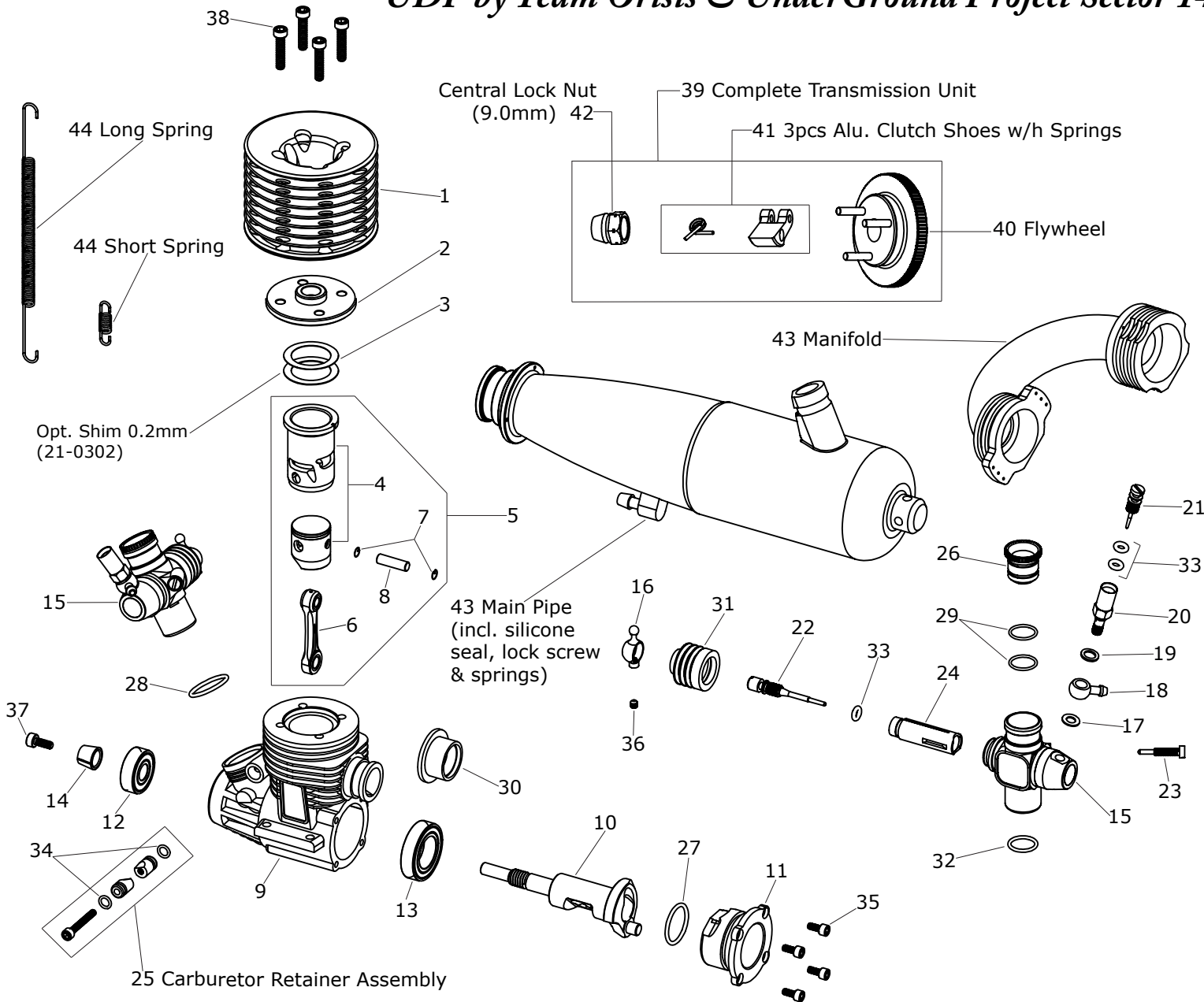




.21 High Performance 4 Ports Off-Road Engine

EXPLODED VIEW & PARTS LIST

UDP by Team Orisis & UnderGround Project Sector 14



Engine Parts		
1	21-UDP	CNC Cooling Head
2	21-0207U	Burn Room (Turbo)
3	21-0303	Head Shim (0.3mm)
4	21-2104	21Piston & Sleeve (4 Ports)
5	21-2204	21 P/S/C Complete Assembly
6	21-0600A	PRO Conrod
7	GP-W001	G-Clips (2pcs/set)
8	PS-0414	Piston Gudgeon Pin 4x14mm
9	CK1U	PRO Crankcase-Black Anodized
10	21-0907T	SG Crankshaft 14mm
11	21-1005-M2	Back Plate Unit
12	B-607B	Front Bearing 7x18.5mm SKF
13	B-AY14B	Rear Bearing 14x25.4mm
14	CU-0001	Brass Cone
Carburetor Parts		
15	UDP1N2U	2 Needle Carb. Complete Set
16	UDP-2002	Throttle Ball Link
17	UDP-2007	Fuel Sup Washer Alu. 7.5x4mm
18	UDP-2008	Fuel Nipple
19	UDP-2009	Fuel Sup Washer Alu. 7.5x5mm
20	UDP-2010	Needle Housing (Main)
21	UDP-2011A	Needle Valve (Main)
22	21-2003	Metering Needle (Low Speed)
23	21-2006	Throttle Stopper Screw
24	28-2004	Throttle Slide Valve
25	UDP-1900	Carburetor Retainer Assembly
26	OR-0039-P8	Alu. Venturi (SILVER) 8.0mm
O-Rings		
27	OR-0003	O-Ring AS-018
28	OR-0004	O-Ring 15.2x1.5mm
29	OR-0005	O-Ring 10x1mm
30	OR-0006	Silicone Exhaust Seal
31	OR-0010	Throttle Slider Grommet/Boot
32	OR-0014	O-Ring 10x1.3mm
33	OR-0023	O-Ring 2.9x1.78mm
34	OR-0032	O-Ring 4x1mm
Screw Sets		
35	S6-2606	Back Plate 2.6x6mm (4pcs)
36	S5-3003	Throttle Linkage 3x3mm (2pcs)
37	S6-3008	Crankshaft 3x8mm (1pcs)
38	S6-3516	Cooling Head 3.5x16mm (4pcs)
Transmission Set		
39	1700B	Complete Set:40+41+42
40	1704-P8	33.5mm Flywheel (Silver)
41	CO13A-1	3 Pcs Clutch Shoes w/h Springs
42	C-0900A	Central Lock Nut 9.0mm
Tuned Pipe EFRA2072		
43	UDP2072	Handsome Dan Tuned Pipe w/h 1 x Silicone Seal + 3 x Springs-Lng+Shrt
44	PI2072-45	3 x Short + 1 x Long Springs